

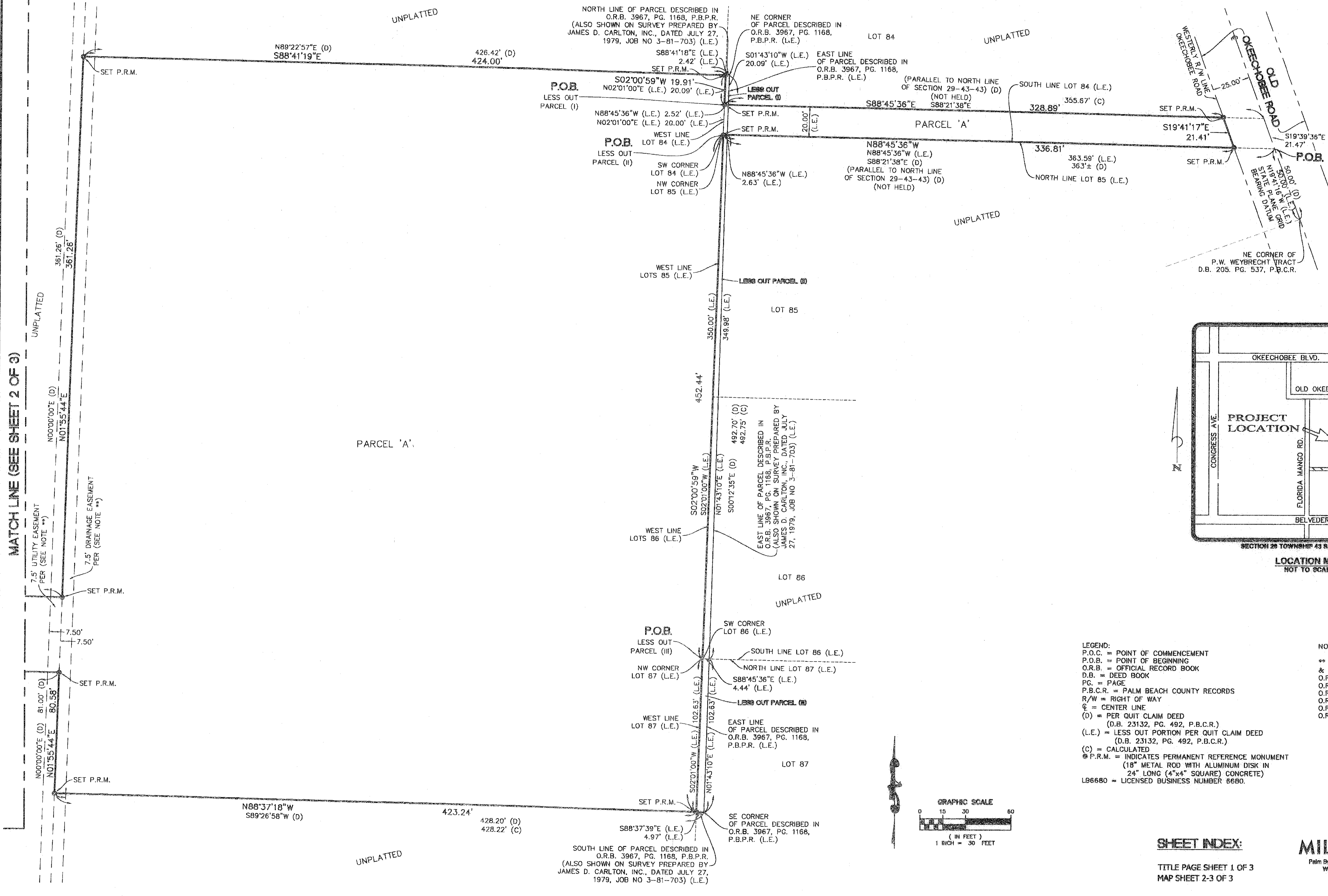
PALM BEACH ICE WORKS

LYING IN THE NORTHEAST QUARTER (NE 1/4)
OF SECTION 29, TOWNSHIP 43 SOUTH, RANGE 43 EAST,
CITY OF WEST PALM BEACH, PALM BEACH COUNTY, FLORIDA.
APRIL 2009 SHEET 3 OF 3

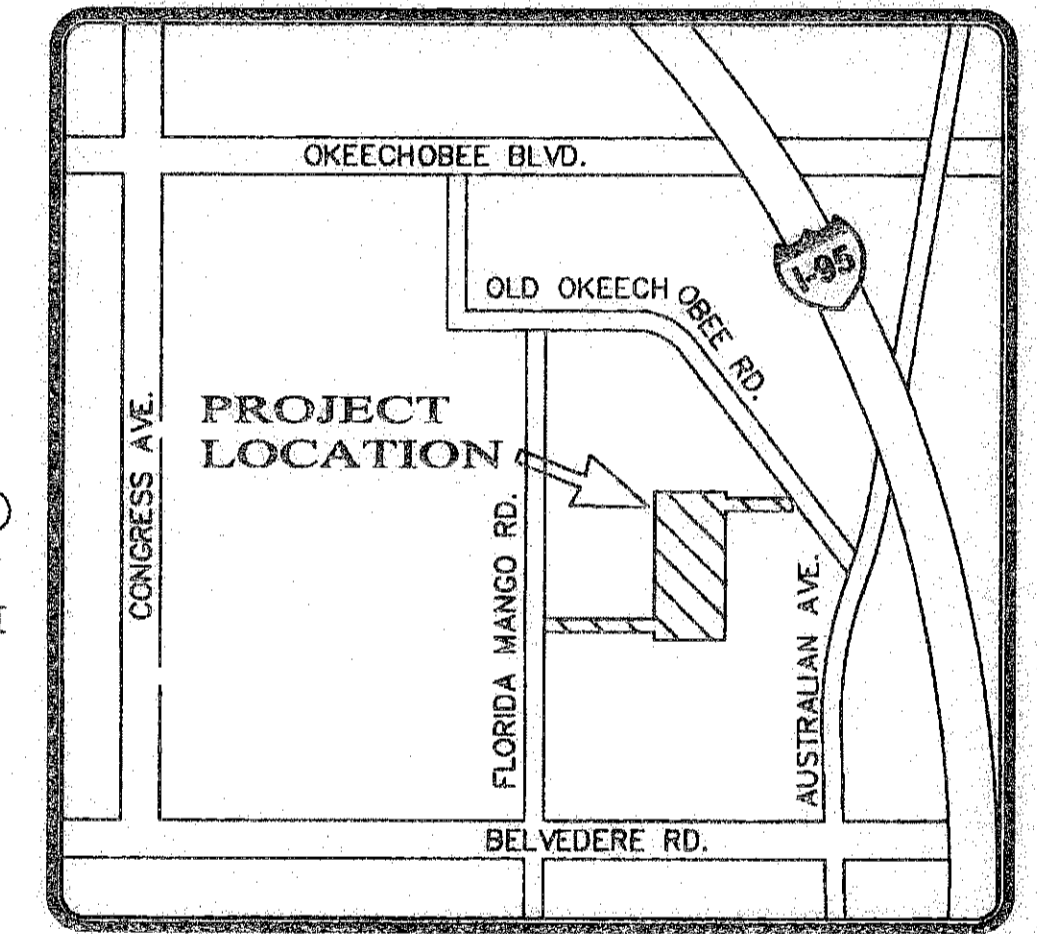
192

STATE OF FLORIDA
COUNTY OF PALM BEACH
This plat was filed for record
at this _____ day of _____, 2009,
and duly recorded in Plat Book
_____ Pages _____ Through _____

SHARON R. BOCK
Clerk & Comptroller
By: _____

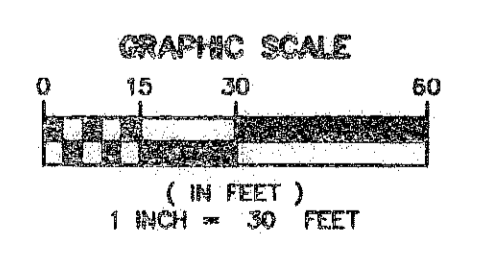


MATCH LINE (SEE SHEET 2 OF 3)



LEGEND:
P.O.C. = POINT OF COMMENCEMENT
P.O.B. = POINT OF BEGINNING
O.R.B. = OFFICIAL RECORD BOOK
D.B. = DEED BOOK
PG. = PAGE
P.B.C.R. = PALM BEACH COUNTY RECORDS
R/W = RIGHT OF WAY
CL = CENTER LINE
(D) = PER QUIT CLAIM DEED (D.B. 23132, PG. 492, P.B.C.R.)
(L.E.) = LESS OUT PORTION PER QUIT CLAIM DEED (D.B. 23132, PG. 492, P.B.C.R.)
(C) = CALCULATED
P.R.M. = INDICATES PERMANENT REFERENCE MONUMENT (18" METAL ROD WITH ALUMINUM DISK IN 24" LONG (4"x4" SQUARE) CONCRETE)
L86680 = LICENSED BUSINESS NUMBER 6680.

NOTES:
** 7.5' DRAINAGE EASEMENT & 7.5' UTILITY EASEMENT PER O.R.B. 2939, PG. 1899, P.B.C.R. O.R.B. 2969, PG. 1412, P.B.C.R. O.R.B. 2999, PG. 51, P.B.C.R. O.R.B. 3113, PG. 68, P.B.C.R. O.R.B. 3113, PG. 70, P.B.C.R. O.R.B. 3101, PG. 1822, P.B.C.R.



SHEET INDEX:
TITLE PAGE SHEET 1 OF 3
MAP SHEET 2-3 OF 3

MILLER LEGG
Palm Beach Office: 2006 Vista Parkway - Suite 100
West Palm Beach, Florida - 33411-2719
561-689-1138 - Fax: 561-689-8108
www.millerlegg.com

Certificate of Authorization: L86680